

Install WiFi APP

Scan QR code below, or search "WIFI Dual Cam" in APP store.

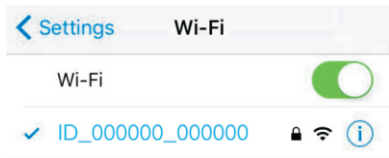


Android APP

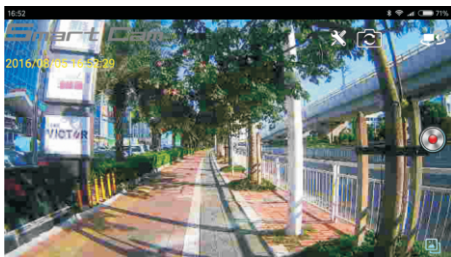


IOS APP


Turn on the WiFi of camera, then connect smart phone or tablet to the WiFi network. Default password is 1234567890 .

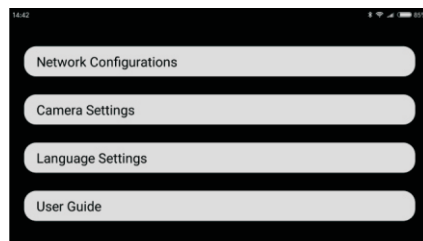


Open WIFI Dual Cam, and enter into preview mode.

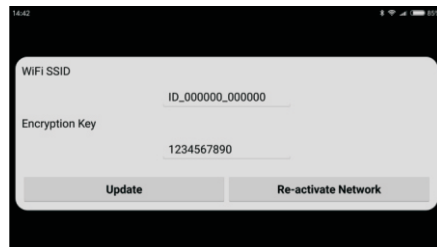


Setting

Tap  to enter into Settings.



Network Configurations:





Camera Settings:



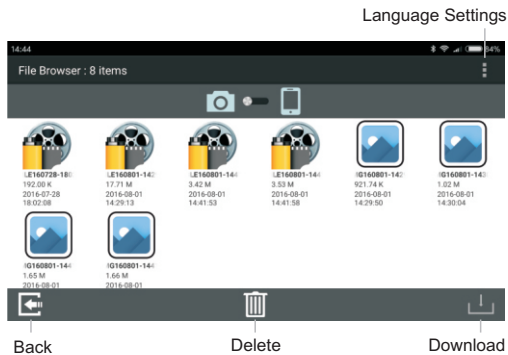
Language Settings:




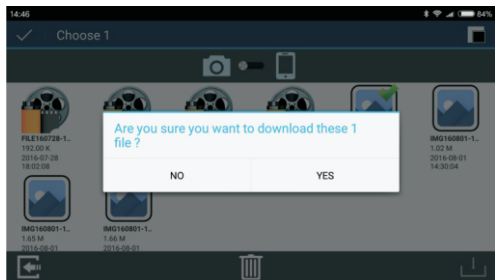
Tap  to switch Camera Channel, it works when external camera is connected.

Tap  to enter File Browser, all files recorded will be displayed.


Tap  /  to display files in Camera or Smart Phone (Tablet).




Tap , then select files you want to download to your phone or tablet.



Tap  to switch Video/Photo mode.

Tap  to record video

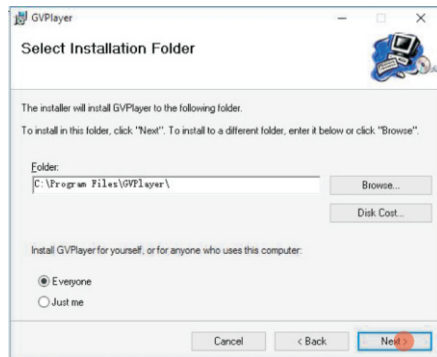
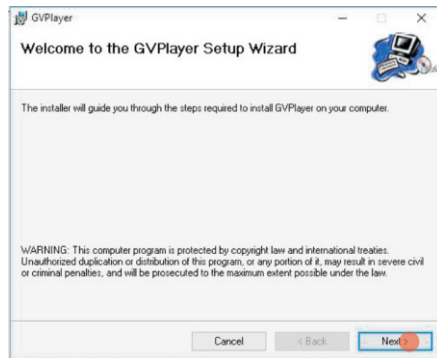


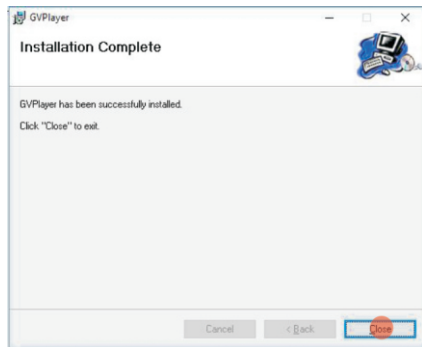
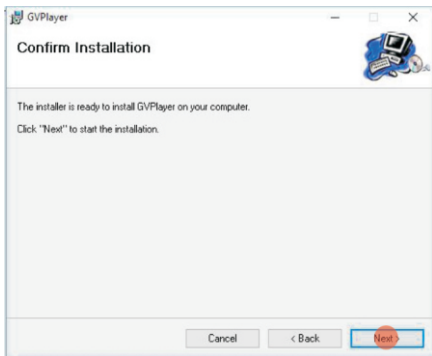
Tap  to take picture.



Install GPS Player

Find "GvpSetup.msi" in the CD disc.
Double click to open it.

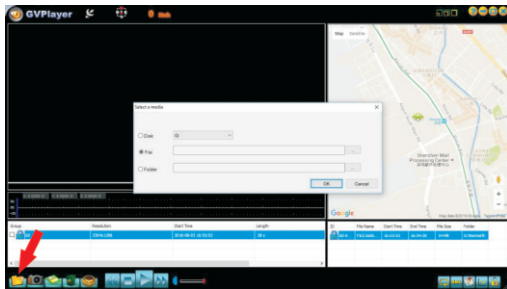
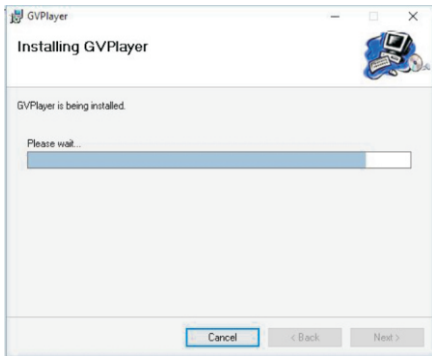




After installation, find "GVP.exe" on desktop. Double click to open it.



Click "Folder" icon to open recorded videos. And choose file location.



Double click file name to play. Location info will be displayed on Google Maps. 2 windows, "1" is for video recorded by main camera, "2" is for video recorded by external camera.



NOTE: Location info displayed on GVPlayer is based on Google Maps. Updates from Google Maps may change the Application Programming Interface used on GVPlayer, when location info can not be displayed normally, please contact product distributor to get new version of GVPlayer.